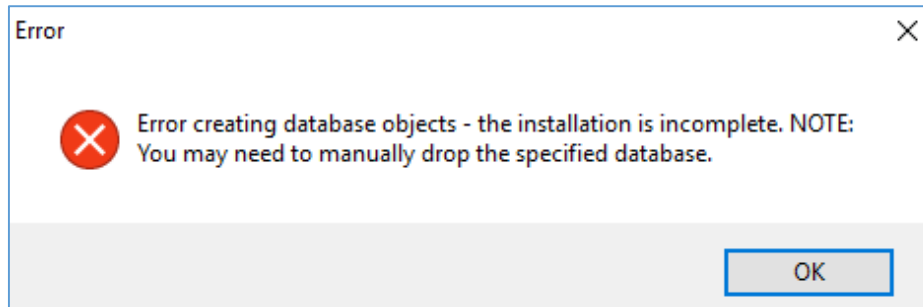


ReportIT Errors

Creating a Database

When attempting to create a database the following error is seen:



There are a number of possible causes for this error:

Possible cause 1: Incorrect SQL Server connection parameters entered.

Solution: Enter correct parameters

Possible cause 2: User does not have required permissions on the SQL Server.

Solution: Use SQL Server Management Studio and check permissions

Possible cause 3: SQL Server Native Client not installed (when connecting to a remote SQL Server).

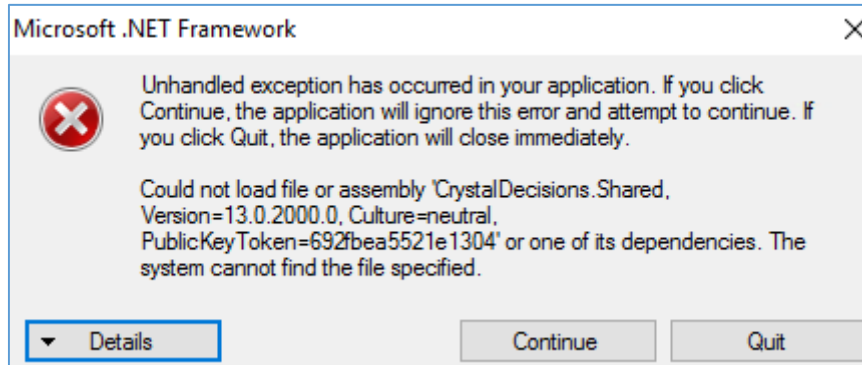
Solution: Install SQL Server Native Client

Possible cause 4: A Firewall is blocking access to the remote SQL Server

Solution: Configure Firewall to allow access

Installing ReportIT Desktop

When attempting to install ReportIT Desktop the following error is seen:

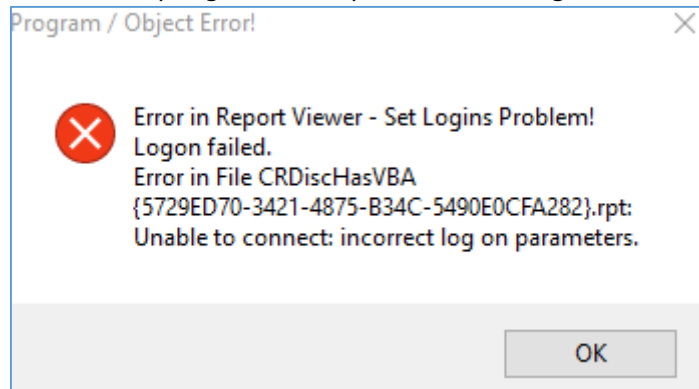


This error is generated if the Crystal run time is not installed

Solution: Install the supplied Crystal Reports Run Time

Running ReportIT Reports

When attempting to run a report the following error is seen:



This error is caused because the Crystal Run Time requires SQL 2008 R2 Native Client.

Solution: Install 2008 R2 Native Client, even if you are connecting to a later version of SQL server