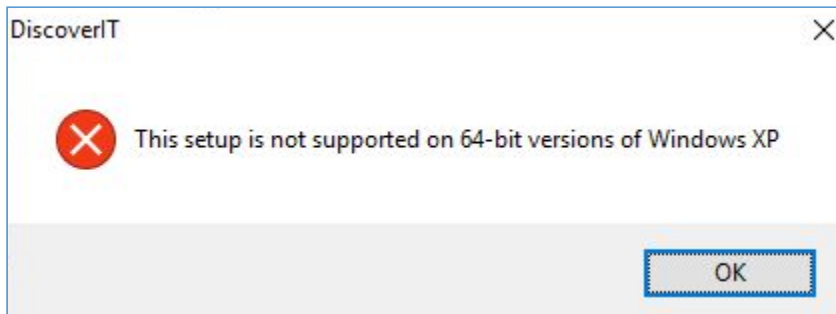


## DiscoverIT install errors

### Error 1.

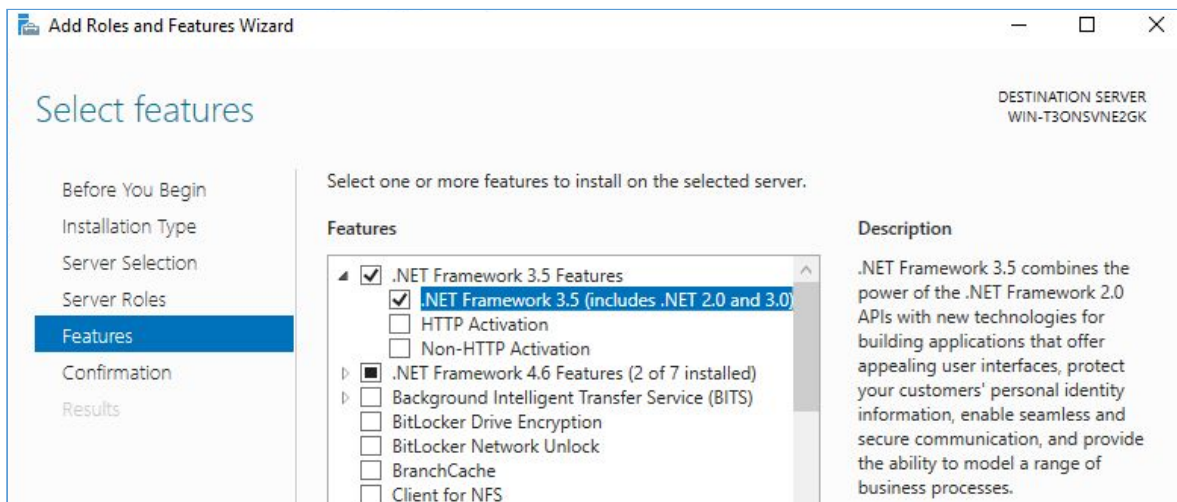
When installing DiscoverIT, the following error is seen:



Cause: DiscoverIT requires that .NET 3.5 is installed on the system.

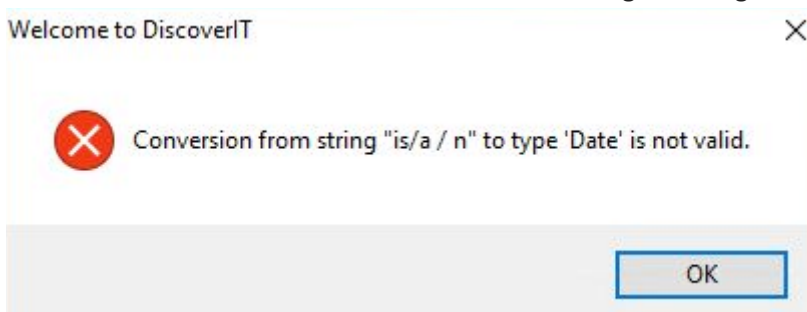
Solution: Install .NET 3.5

On Windows Server use Add Roles and Features Wizard to install .NET 3.5



### Error 2.

After the license information is entered the following error is generated:



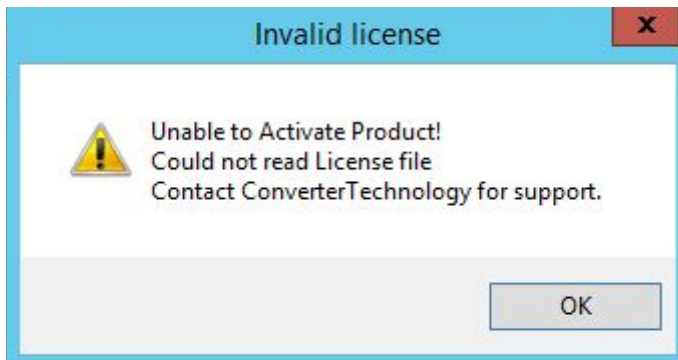
Cause: Incorrect key or company name has been entered.

Solution: Input correct key and company name.

Please note that the license key and company name must be exactly as supplied.

### Error 3.

When DiscoverIT runs for the first time the following error is generated:



Cause: DiscoverIT was unable to write and subsequently read the License information

Solution: Run DiscoverIT as Administrator (one time only), this will allow the license to be written and subsequently read by DiscoverIT